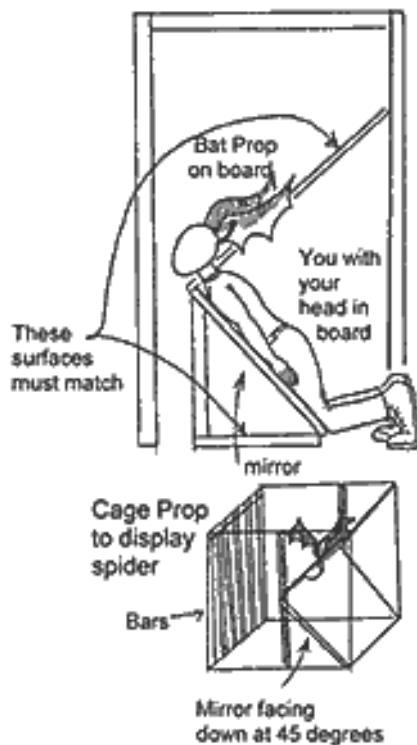




http://www.hauntworld.com/JPfeiffers_HowTos/floating_head.html

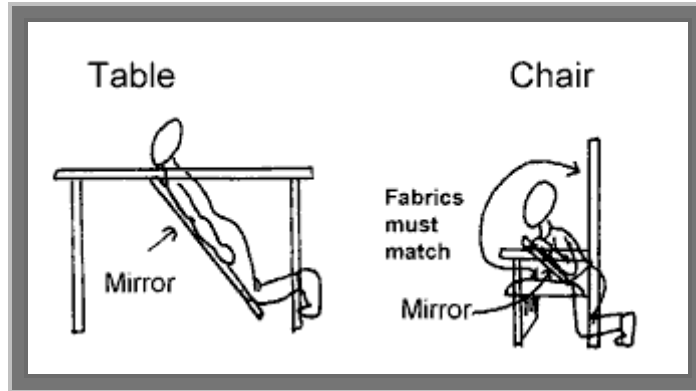
Creature with Human Head or Floating Head



Perform this effect with a mirror to hide the lower body of the character. Make a prop table or chair with the mirror positioned at a 45° angle to reflect the floor or chair seat surface. Place the body behind it.

The background behind the head must match that of the floor or seat pattern reflected by the mirror. Attach the prop of the creature's body (a bat or spider) to a board that is positioned at a 45° angle above the head.

Position a mirror at a 45° angle below the head to reflect a floor pattern that must match the backdrop. For support, and to add effect, build the scene in a small cage.



Use the same trick is used to float a head. These can be great illusions when properly designed and lighted.