



<http://www.garageofevil.com/projects/agedcopperlanterns.php>

## Aged Copper Lanterns

So as the columns get done, it's time to add the details. I wanted the columns to have lighting and I was kicking around the idea of mounting wall sconces. After a little more thought it might be cheaper, and perhaps cooler to hang gas lanterns off them for the lights. Each column will have one apiece, hung off the front of the column.

So I trekked to The Christmas Tree shop and netted me (2) really cheap ass ugly gloss black lanterns for eight bucks each. They had different colors, but I wanted to start off with a neutral base.

Then I hit Home Despot and grabbed the following:

- \$.99 (1) can CHEAP flat black. Get the cheap stuff for this, we don't want good coverage
- \$4.00 (1) can good quality copper metallic
- \$4.00 (1) can good quality satin green in a color the you feel most approximates a verdigris finish
- \$4.00 (1) can window frosting
- \$3.00 each (2) Flicker "flame" bulbs

The paint purchase will net you enough coverage to make about (I'm guessing) about a dozen of these.



The lanterns look like this - shiny, black and horribly new:

So here we go, take the bulb assembly and glass out and put them aside. Work quick, only a minute or two is needed between the steps. With the exception of the copper colored step, you can work quick, and you want to.

Sorry in advance for the terrible cell phone pics.



Step 1: Shoot a light coat of copper, wait 5 minutes, then another. let it dry, which should only take about 10 minutes as this stuff dries very fast if you go light.



Step 2: Knock it down with a light misting of flat black

Obtained from  
Omarshantedtrail.com



Step 3: Shoot a light coat of green - and don't freak out, it won't look this pretty for long



Step 4: Knock it down with a light misting of flat black - don't mind the glass being in the frame below, it was the only pic I had that showed about where you should be in this step.

Repeat step 4 as needed, going light with each repeat until you hit the look. Give it a few minutes between shots once you get to this part, because it looks very different once the gloss goes away as the paint dries. You'll see it drying to a very matte finish, which is what you want. It's Ok to cover the copper coat, you'll bring it back later in the last step.

Step 5: Put the lantern aside and grab the glass and glass frosting paint. Shoot a light coat on outside of the glass, then shoot a light coat of flat black in a "stripe" across the middle. Wait a minute or two for this to setup then repeat. You're creating soot and hiding the cheesiness of the flicker bulb.

(sorry for lack of pics, scroll to the finished pics at the end for the idea)

Step 6: Put the bulb and glass on. Shoot some more black on the glass lightly, don't worry about a light overspray. Then light the bulb, and shoot some more black if needed.

Step 7:

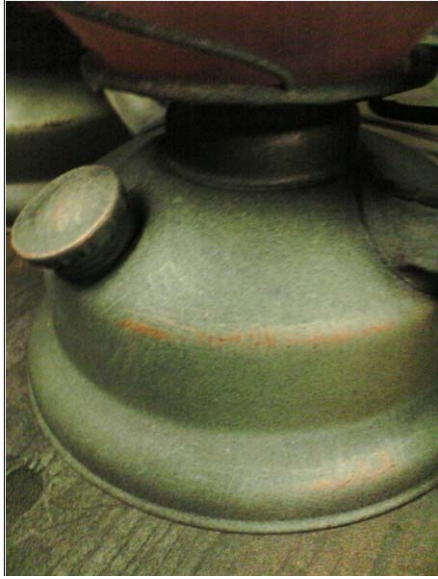
Once it's completely dry, go in with a little super fine sand paper or steel wool. On the raised surfaces lightly knock down some paint to expose a bit of the copper base on surfaces that are raised. Less is very much more in this case. Refer to the detail photo (last one) for the effect.



Finished:



Obtained from  
Omarshantedtrail.com



Detail of wear:

Obtained from  
Omarshantedtrail.com