



<http://usersites.horrorfind.com/home/halloween/decaye/index.html>

## Casting a Skull

If you are going to make a casting, be sure that there are few undercuts as they make cast removal more difficult.



Here is what I decided to cast.

Obtained from  
Omarshauntedtrail.com

Gather your materials and prepare your workspace

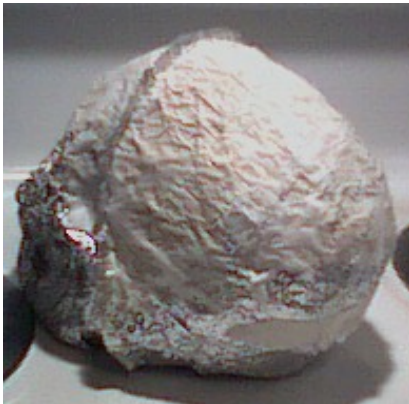
What You Will Need...

- A Skull to Cast
- Aluminum Foil
- Mache' Mixture
- Small Paintbrushes
- Potty Paper (Plain, 2-ply cheapie works best)
- Condensed Coffee
- Newspaper to cover your workspace



Cover your skull with foil, being careful to cover it completely and as smoothly as possible. Make sure any special details such as eyes etc., are well defined.

For easier removal, fold the foil in half and then fold the folded edge over about 1/4".



Open it back up, leaving the 1/4" ridge raised up the middle.

Using a small paintbrush, start applying the mache mixture over a portion of the foil. Get it good and wet and then lay a torn piece of potty paper or snot rag over the wet spot. You can press it down with your fingers or use the dry paintbrush to make sure the paper sticks. Continue applying the mache and paper over the top surface of your skull, over lapping edges and avoid covering the raised ridge. You can apply about 3 layers before you should let it dry. I put it in the oven at about 150 degrees until it's dry enough to handle. Flip it over and cover the underside and let that dry.

Ready for Surgery?



Now that it's dry, you're ready to cut the casting off the skull.

Using scissors, begin cutting off the raised from ear to ear until it comes apart.



Cut away or fold under any exposed foil.

Piece your casting back together, cleaning up the cut edge as needed. To hold it together, I just started applying layers of Mache' along the cut, but you can use glue or small pieces of tape if you wish.

At this point, you will want to add a few more layers onto your project for added strength and to even out any thin spots etc.. You can build up the teeth, add a center nose-bone, ears or any other details you might want. Once it's thoroughly dry, you can sand it down smooth or leave it with a nice wrinkled skin. From here, it's on to the Final Layer!!

### **Slip Me Some Skin!!**

#### **The Final Layer**

For the last layer, you apply the mache' to larger areas at a time. Start painting on the mixture good and thick and pressing the paper down firmly. You can place a second dry piece of paper over the top to keep your hands from sticking while you're pressing the paper down. Make sure that all of the mixture is covered with paper and that no bare mixture is showing. Any loose ends of paper can be delt with later. It can feel damp, but not sticky.

## Design Note\*\*



Any areas with bare mixture will not absorb the coffee color. You can leave the teeth uncovered, or maybe a patch on one cheek or a patch on part of the top of the skull making it look like bone is showing through the rotted skin.

At this point, you can start applying your coffee coloring. Dip a clean paintbrush into the coffee and lightly touch the surface. You can make it splotchy or try for a more even color. You can let the paper wrinkle up for a nice withered look. Let it dry in the oven for a few minutes and dab on more coffee until you get the look you want.



**And Here She Is...**

Obtained from  
Omarshantedtrail.com



For outdoor use, be sure to seal your project completely with a few good coats of a clear, non glossy spray sealant.

Obtained from  
[Omarshauntedtrail.com](http://Omarshauntedtrail.com)